
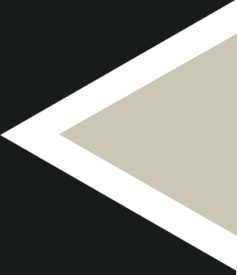

Zutari launch

Media briefing - 21st July 2020

ZUTARI IMPACT. ENGINEERED.

- 
- 
- 1 Welcome & Housekeeping
 - 2 Meet Zutari - Video
 - 3 The Zutari story
 - 4 Questions & Answers
 - 5 Closing

Our story



ZUTARI IMPACT. ENGINEERED.

1932 ◀

Ninham Shand was established in South Africa.

1951 ◀

Van Wyk and Louw was established in South Africa.

1994 ◀

Van Wyk and Louw rebranded as Africon.

1994 ◀

Africon expands to Greater Africa with a presence in Angola, Mozambique, Botswana, Malawi, etc.

2009 ◀

Aurecon is formed. Africon, Connell Wagner and Ninham Shand announce formation of a new global group, Aurecon, with over 210 combined years of experience across four continents.

2012 ◀

Aurecon merges with NETGroup, a transmission and distribution solutions provider and market leader in the electricity consulting industry.

2013 ◀

Aurecon merges with QUOIN, a leading quantity surveying practice servicing the mining, energy, process and heavy engineering sectors in Africa.

▶ 2020

The African business demerges from the Aurecon Group to become Zutari.

The beginning

In 1932, a small office in Cape Town, South Africa, became the catalyst for a nearly one-hundred-year journey, that now in 2020, sees us becoming Zutari.

Our consulting engineers and trusted advisors have worked in over 33 African countries, as well as the Middle East, Asia and Australia. Our belief in shared value has driven our decisions to merge with multiple companies since the early 2000s.

In previous lives we've operated as Africon, Ninham Shand and Netgroup. Following a merger with an Australian company in 2009, we became Aurecon. This merger allowed us to embrace a global perspective, significantly increase our expertise and participate in world-renowned projects.

We've learnt that what works globally, does not always translate into authentic African solutions.

A bold step

But...we've always put Africa first.

This is what prompted the owners of Aurecon Africa in October 2019, to take the bold step of demerging from the global business, headquartered in Melbourne, Australia. The decision led to the birth of Zutari.

Of course, back in October no one could have predicted that the beginning of 2020 would see the emergence of a global pandemic, with Covid-19 having a devastating impact on both a macro-economic and a community level. Management could already see the winds of change push back against globalisation as early 2019.

We could see the market changing, and decided to demerge from the global company to be proudly African. It is interesting how the pandemic has accelerated this trend towards localisation, especially as borders remain closed and international travel continues to be restricted.

A well planned journey

In the current business environment, some call our move audacious, others call it risky. For us, it is the culmination of a well-planned journey towards Zutari, which is committed to Africa because it believes passionately in its future.

The fact that we are a private, management-owned company with African owners makes our commitment real – we have a vested interest in our clients' success.

In the past 90 years, we've formed a relationship with Africa and its people. While its problems and challenges have defeated many, we've seen this continent at its best and its worst.

Our local knowledge is unrivalled, making us the perfect partners for those unfamiliar with this proud continent.

Our international experience and Global Design Centres allow us to bring world-class solutions to our clients.

We operate where these worlds meet. It is a marriage of possibilities.

We co-create
an engineered
impact



ZUTARI IMPACT. ENGINEERED.



Co-create

Complex problems require collaborative solutions.

The different perspectives needed to identify the real issues and challenges we need to solve, don't reside in boardrooms or blueprints. We spend enough time in the world of our end users to truly understand the impact we're being asked to make.

You have to commit to make a difference.

As an industry, we have the responsibility to design infrastructure projects that generate employment and benefit local communities. You have to factor in the social and environmental impact on any design. We don't design in isolation and present solutions as *fait accompli* – we design with clients.

It's this process of co-creation that delivers joint solutions that matter. A strong network of relationships is key to connect clients, stakeholders and partners with shared interests. It allows one to co-create new opportunities – often opportunities never considered before. It's the commitment to truly add value that earns the trust of clients in our industry.



Engineered

The intentional, skillful and artful approach that drives us beyond traditional engineering.

Engineered solutions reframe traditional engineering expertise for a new world. A world where you have to continuously innovate to deliver better results. Our technical eminence, accrued over decades, is now **grounded in digital engineering** to help us solve problems where human ability alone is not enough. What took days, now takes moments. Digital technologies enable us to collaborate better, imagine boldly and make smarter decisions.

We have moved beyond traditional engineering – and today **we integrate technical and creative thinking**. We employ design thinkers to help us explore problems deeper. We deliberately invite different voices to the table. It's how we expand our creative capacity to engineer solutions for impactful, lasting change.

Traditional engineering focussed mainly on the design and construction of assets. Today, **we deliberately connect assets to strategy** and better decision making. We see better results when the designer of an asset are also advising clients on how to plan, operate, maintain, optimise and repurpose their assets.



Impact

The deliberate and shared value we create for the economies, environments and communities we serve.

Impact is hard-won. The best social and environmental performance needs to be underpinned by strong financial performance. True sustainability requires the three to be integrally linked.

Engineered solutions should not only consider the impact on the environment and communities, but also consciously deliver economic value that help clients stay and thrive in business.

That's how you create an impact that matters. We create the solutions to some of the world's most challenging problems. On this continent, we need to deliver solutions appropriate to the continent. What might be feasible for highly developed markets like the US or Australia, is not necessarily affordable, let alone viable here. We fully support Africa's vision of a non-racial and non-sexist, inclusive democracy by creating opportunities for all. Because the only way we will improve the world, is by working together.

Unrivalled
skill base



ZUTARI IMPACT. ENGINEERED.

Broad collective of expertise

Few can match our local capacity

Our experienced, multidisciplinary teams connect across traditional boundaries to help Africa grow. We bring people together. Engineers and economists. Planners and digital practitioners. Communication specialists and business consultants. A broad collective of expertise joins forces to solve complex challenges.

We blend engineering consultants (civil, structural, mechanical, electrical, industrial, chemical, process, and environmental) with business consultants, economists, planners, digital practitioners, communication specialists and project managers.

About 75% of the nearly 2 000-strong multi-disciplinary employees are professional engineers, technologists or scientists. Few other companies can match this local capacity, long-standing presence and understanding of the challenges required to operate successfully across various regions in Africa.

This broad collective of in-house, industry-recognised engineering consultants and trusted advisors allows the well-integrated delivery of projects, as well as the flexibility to scale engagement as required.

It's how we solve complex challenges more efficiently.

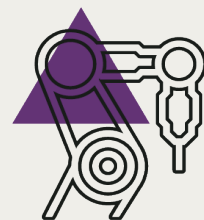


Our Markets

Our projects cross markets, disciplines and geographies, creating a footprint of engineered solutions that are reframing Africa.

We work in new ways, co-creating with our clients, our communities and end-users.

We connect differently. Our impact is multiplied when strong relationships and shared interests unearth new opportunities.



Manufacturing



Energy



Government



Health



Transport



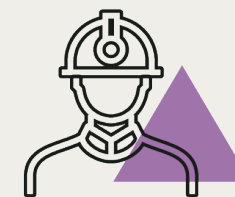
Education



Petrochemical



Property & Land

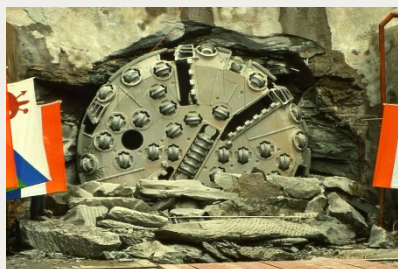


Resources



Water

A century of true impact



▶ **2020s**
Lesotho Highlands Water Scheme
 Lesotho



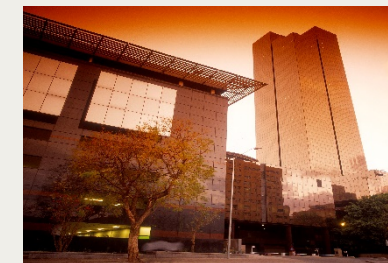
▶ **2010s**
Waterkloof Airforce Runway
 South_Africa



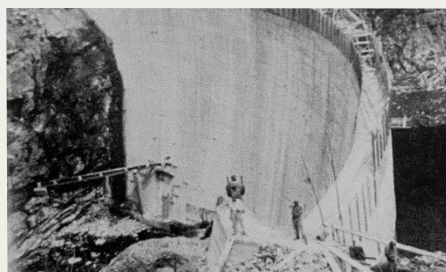
▶ **2000s**
OR Tambo International Airport
 South Africa



▶ **1990s**
Freedom Park. Tshwane
 South Africa



▶ **1980s**
Reserve Bank
 PRetoria



▶ **1930s**
Swart River Dam, George
 South Africa



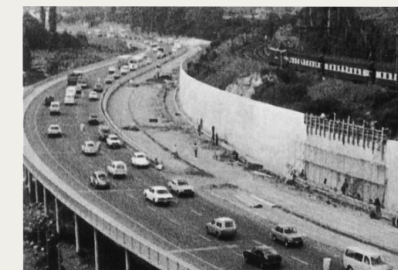
▶ **1940s**
Stettynskloof Dam, Worcester
 South Africa



▶ **1950s**
Sanlam Building, Cape Town
 South Africa



▶ **1960s**
UP Administration Building
 South Africa



▶ **1970s**
Wonderboompoort
 South Africa

Zutari co-creates impact that
enables people, economies
and environments to thrive.

ZUTARI IMPACT. ENGINEERED.

Q&A

ΣUTARI IMPACT. ENGINEERED.